

**Specifications**

Capacity – dry weight, cotton up to		60 kg
Batch diameter (nominal)		940mm
Cycle time min.		75 sec.
Moisture retention (DIN 11901) as per operation conditions		48 – 54%
Electric connected load	8.7 kW	consumption approx. 6.3 kWh
	12.2 kW	with periods shorter than 2min. resp. 60 cycles 9.3 kWh
Cooling water, utilized in the batch washer		approx. 350 l/h
Compressed air:	6 bar	approx. 2l/shift
Entrance dimensions, machine laid flat, hydraulics not disconnected (without oil)		W=1500mm, H=2400mm
Operational dimensions		length 2060mm, width 1840mm, height 3140/3400mm
Operational weight		approx. 8500 kg
Transport weight		gross 8600 kg

**Application**

The **Lavapress LP 571** is a single stage press for cyclic extraction of processed laundry batches consisting of 0-60 kg dry weight, transferred from the batch washer.

**Extraction**

Effected even and conservative by means of controlled pressure build - up via a pressure pad mounted to the press stamp containing a constant water filling.

**Standard version**

Solid steel design by means of a closed unit consisting of a base section, columns and head section.  
Oil hydraulic with oil cooling and 200 liter filling  
3 selectable pressure stages, e.g. 12, 18 max. 30bar  
Pressure shut-off each pressure stage possible  
1 replacement pressure pad  
In line, respective angle positioning optional  
Chute for **Lavatec** batch washer  
Electric supply: 3/N~50Hz, 400/300V  
Micro processor control with function monitoring and manual control.  
Laundry contact only with stainless steel parts.  
Machine panelling made of stainless steel, wire-brushed-finish.  
Large maintenance doors on two sides of machine.  
Large dimensioned water collection-tank with pump device and drain connection.  
Transport conveyor with drainage plate for safe batch transport from the press.  
Pedestal for height adjustment.  
Cooling water valve.  
Machine equipped in accordance with relevant safety standards.

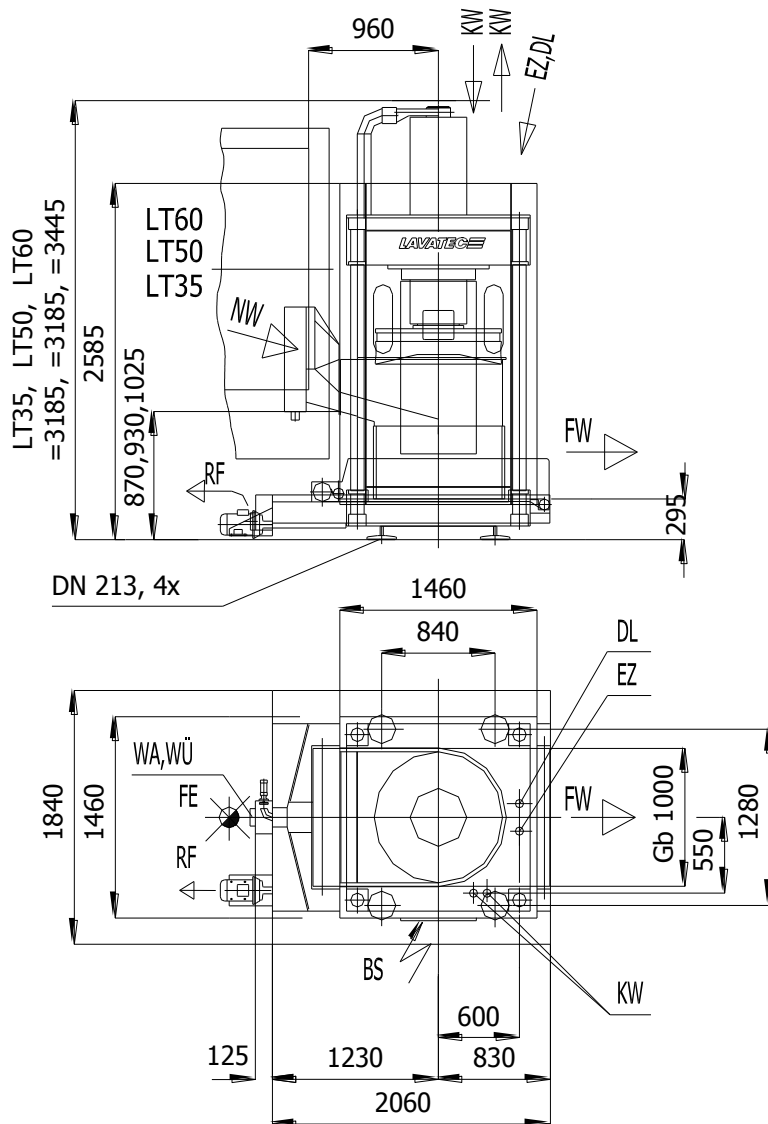
**Special version**

Programable pressure control for special textiles, laminates or the like  
Chutes for selected batch washers, respective special positioning.  
Conveyor extension + 600mm.  
Conveyor – special length compensation by intermediate conveyor.  
Electric: special voltage, special frequency, CSA-, Nema/UL-regulation.  
Visual alarm  
Interface for operation data recording  
Additional pressure pad  
Water flow pump instead of emersion pump for water return into tunnel washer  
Disinfection – DHSS (prepared) automatic disinfection of transport conveyor  
Embedded in disinfection of tunnel washer by means of hot water  
Disinfection – complete with tank, independent chemical disinfection

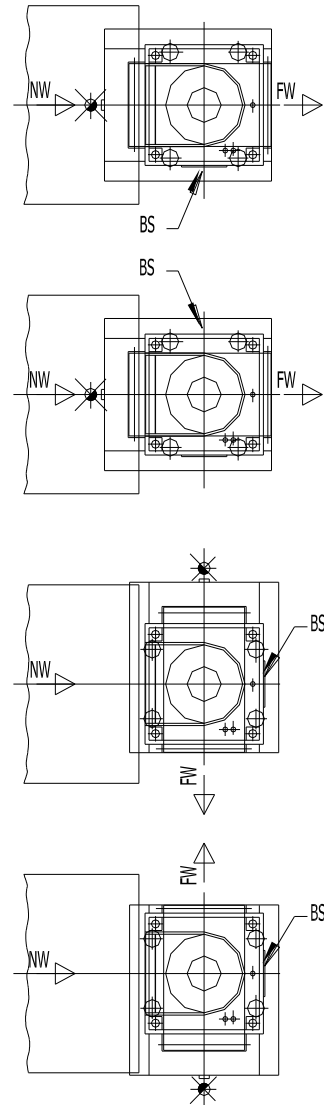
**Accessories**

Transport units for batch transfer

Standardpresse



Aufstellungsmöglichkeiten:  
Installations:  
Variantes d' implantation:



NW = nasse Ware  
wet linen  
Linge mouillée

FW = feuchte Ware  
moist linen  
Linge humide

EZ = Elektro-Zuleitung  
electric supply  
Arrivée électrique

RF = Rückflotte zur Waschmaschine DN50  
water recovery DN50  
Branchement de refoulement DN50

WÜ = Wasserüberlauf DN 100  
water overflow DN 100  
Débordement d'eau DN 100

WA = Wasserablauf DN 100  
water drainage DN 100  
vidange DN 100

BS = Bedienseite  
service side  
Côté de commande

FE = Fußbodenentwässerung  
floor drain  
Drainage au sol

KW = Kühlwasser Vor/Rücklauf DN15 (R 1/2")  
cooling water IN/OUT DN15 (R 1/2")  
Eau à refroidissement marche avant/rétour DN15 (R 1/2")

DL = Druckluft DN 6  
compressed air DN 6  
Air comprimé DN 6

Einbringöffnung:  
Entrance dimensions:  
Ouvertures d' acces:

Höhe/Height/Hauteur = ca. 2400 mm  
Breite/Width/Largeur = ca. 2000 mm  
Wandabstand = ca. 900 mm  
Wall distance = ca. 900 mm  
Distance au mur = ca. 900 mm

Technische Änderungen vorbehalten / Subject to alterations / Modification sous Réserve